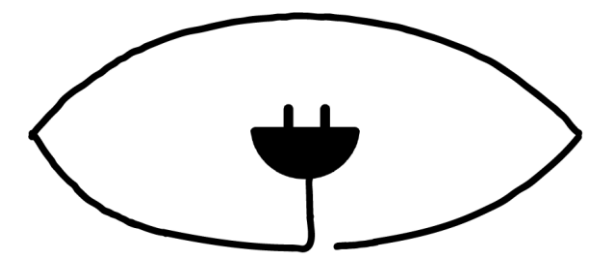


TIESA – A Smart, Simple and Scalable Energy-Saving Assistant

Empowering Every Home to Save Energy, One Leaf at a Time

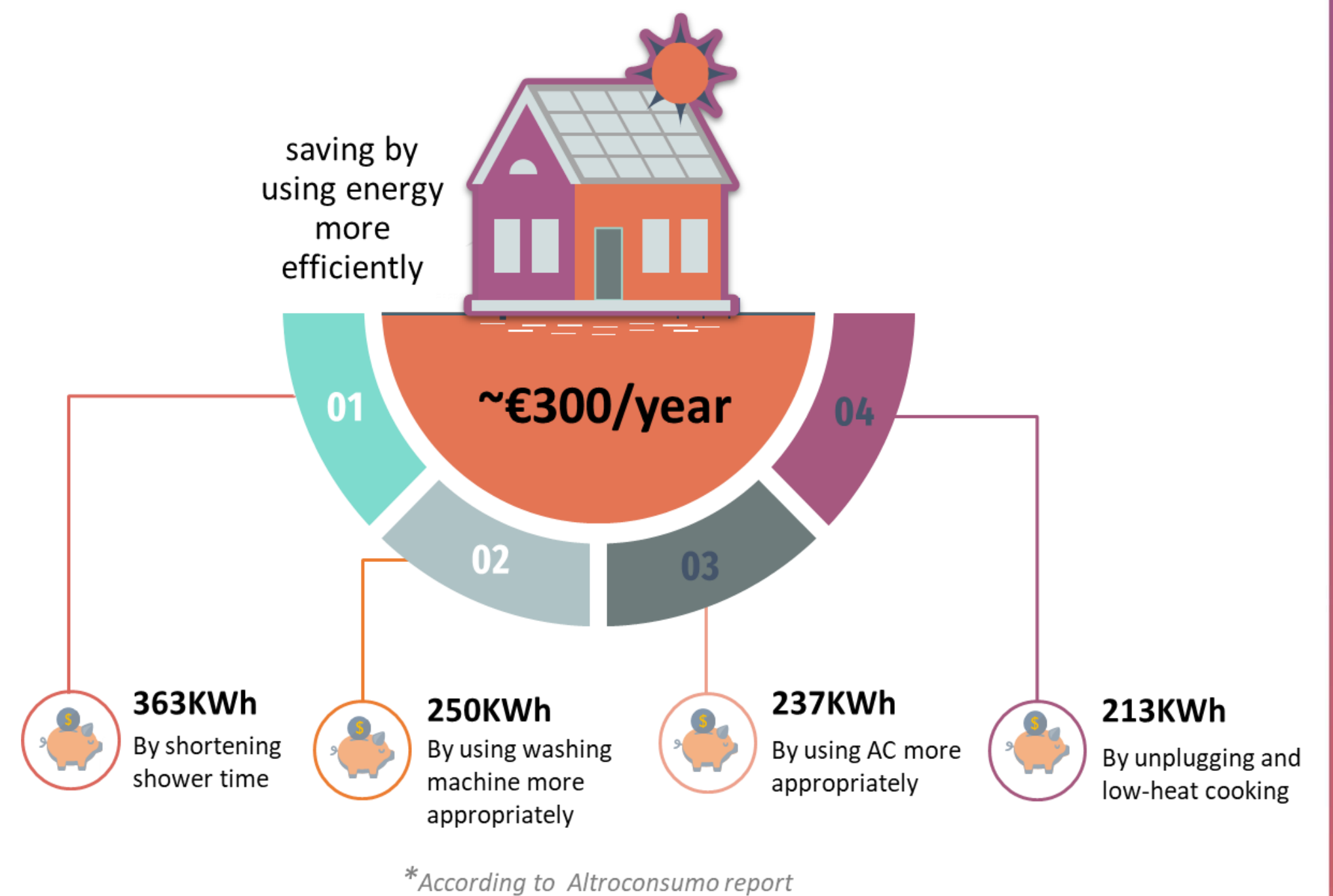
Habeel – Michèle – Noor – Paolo – Yan

6th September 2024



The Rising Challenge of Energy Consumption – A Growing Concern for Households

- Emma (University student, 21)**
“Even though I live in a small rented apartment, my energy bills keep rising. What could I use that can help me reduce my daily energy consumption and save money?”
- Omar (Father of two, 42)**
“I want to reduce our carbon footprint for the sake of my children. How can I optimize the use of solar panels and wind power generator to be more energy efficient?”
- Sarah (Tech enthusiast, 35)**
“I’m on the lookout for the latest technologies. Is there one that can make use of my smart home sensors and artificial intelligence that I can easily integrate into my daily life?”
- John (Retired engineer, 62)**
“I read that poor indoor air quality can affect the health of older adults. What’s a cheap way to monitor and maintain good air quality and room conditions at home?”



The TIESA Solution: The Leaf that Listens, Learns and Leads



Interactive Design

- Ask TIESA about your energy use, and it responds with insights that turn everyday actions into energy savings
- TIESA’s real-time data visualization shows you exactly how much energy you’re saving – minute by minute, day by day

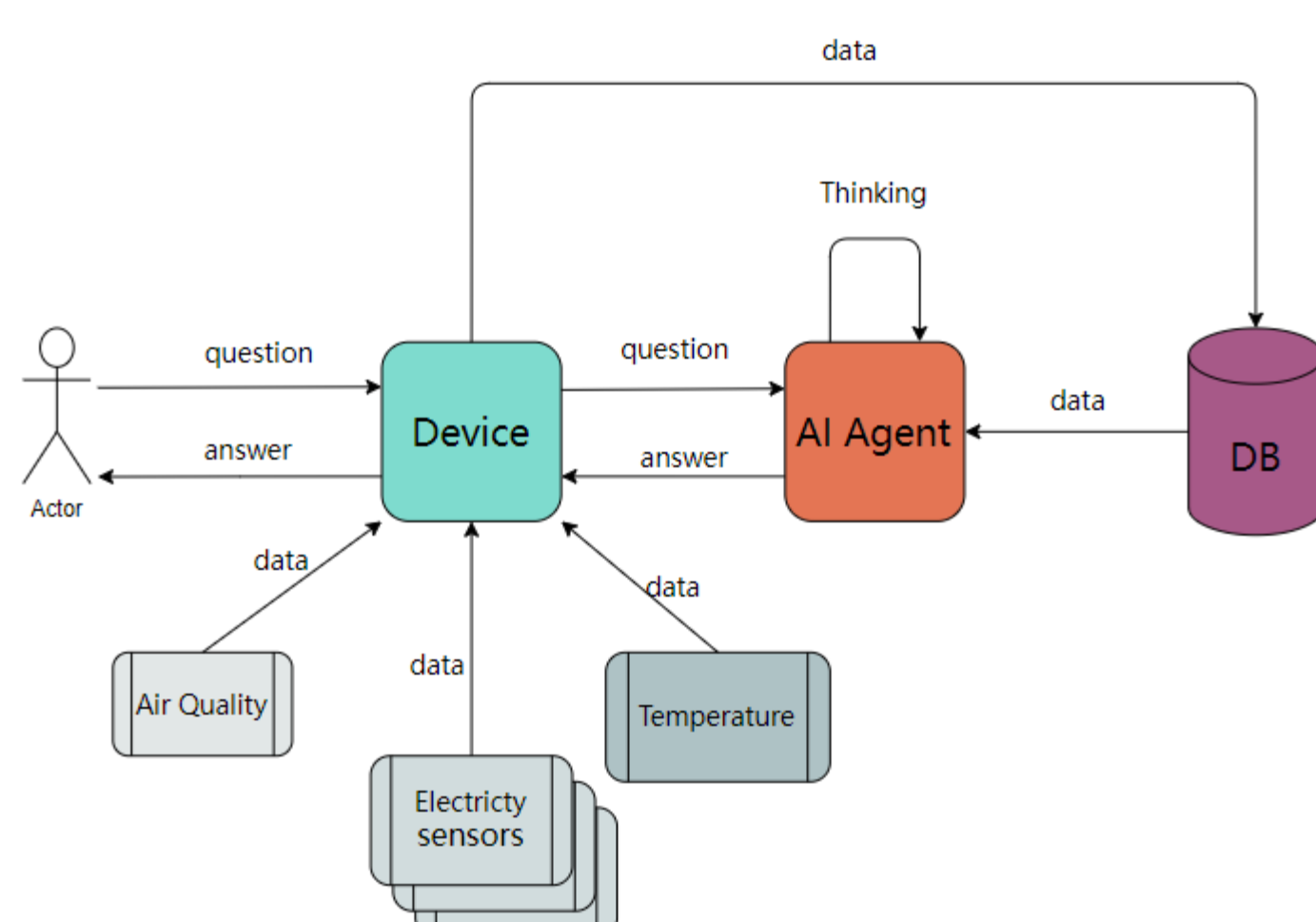
Personalized Intelligence

- TIESA learns your routines, understands your needs, and tailors its advice to fit your lifestyle
- No complex jargon, no difficult setup—TIESA is plug-and-play, designed for everyone from tech newbies to seasoned pros

Modern Hardware and Software

- TIESA is based on Raspberry Pi and smart home sensors that monitor your energy usage in real-time
- Through intuitive interfaces and voice-control, TIESA offers custom tips and reminders to optimize energy consumption

AI Workflow



Future Visions



Smart. Simple. Sustainable. Shaped Like a Leaf, Ready to Change the World.

